



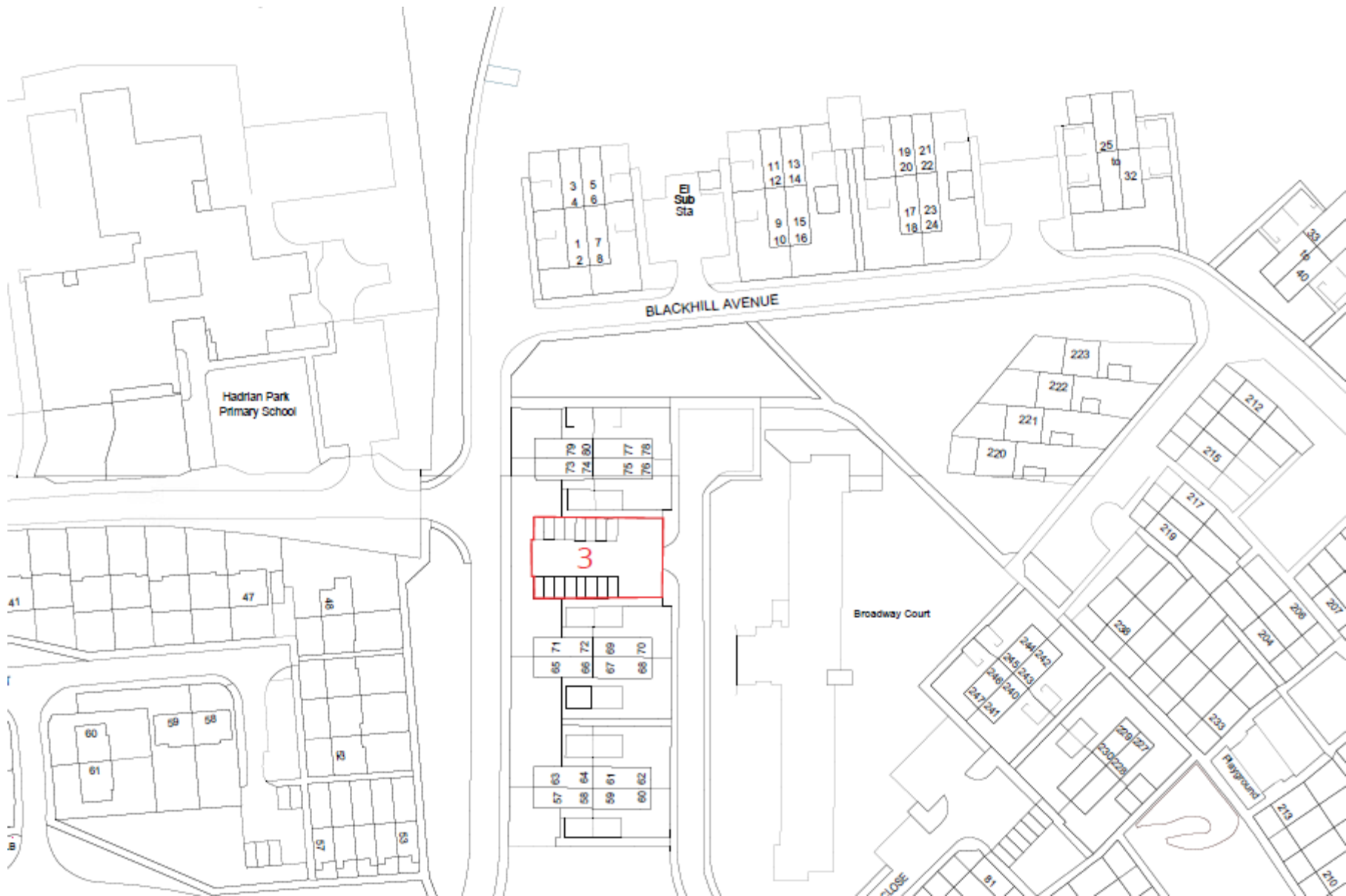
# Planning Committee

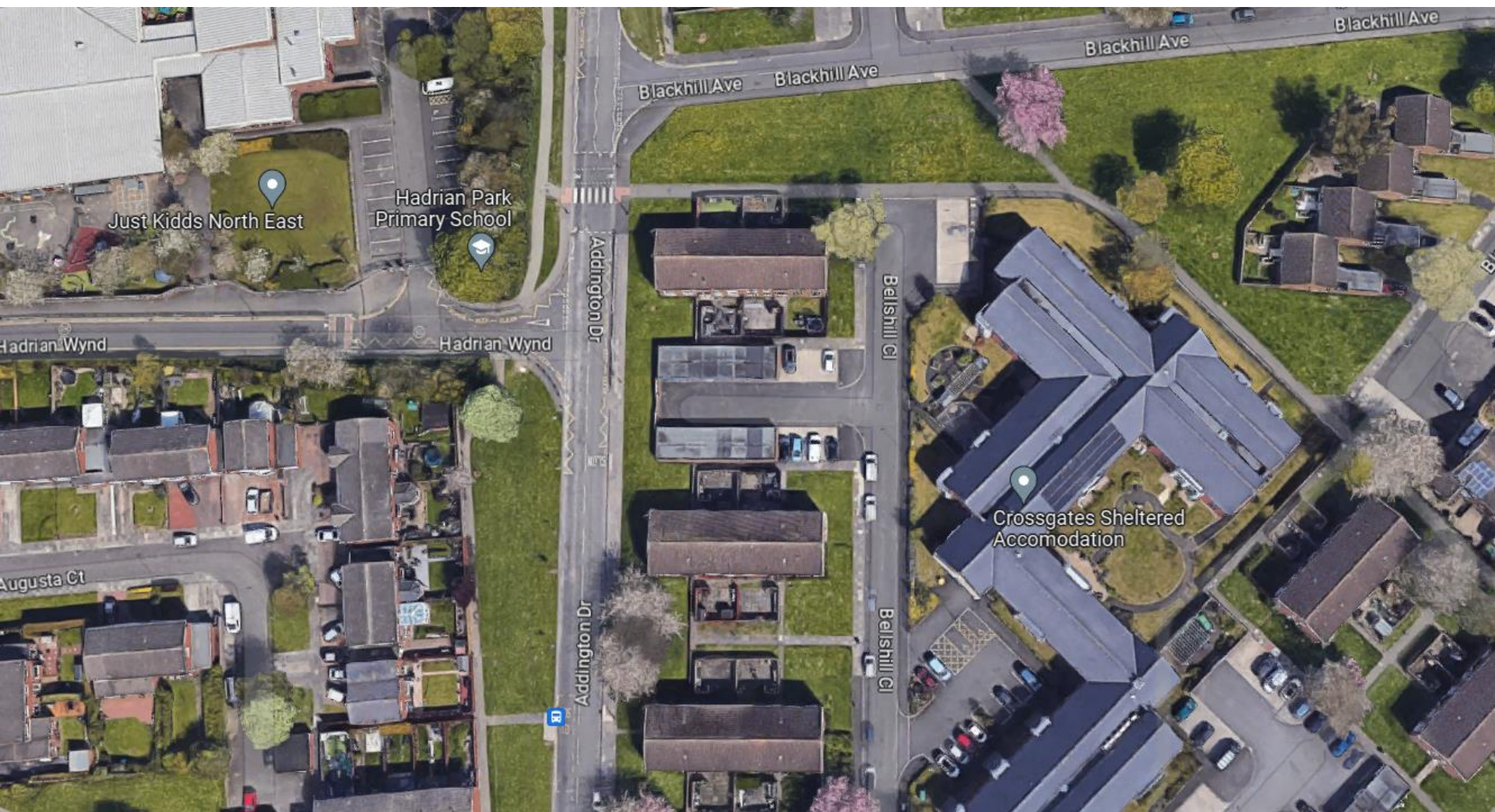
29 August 2023

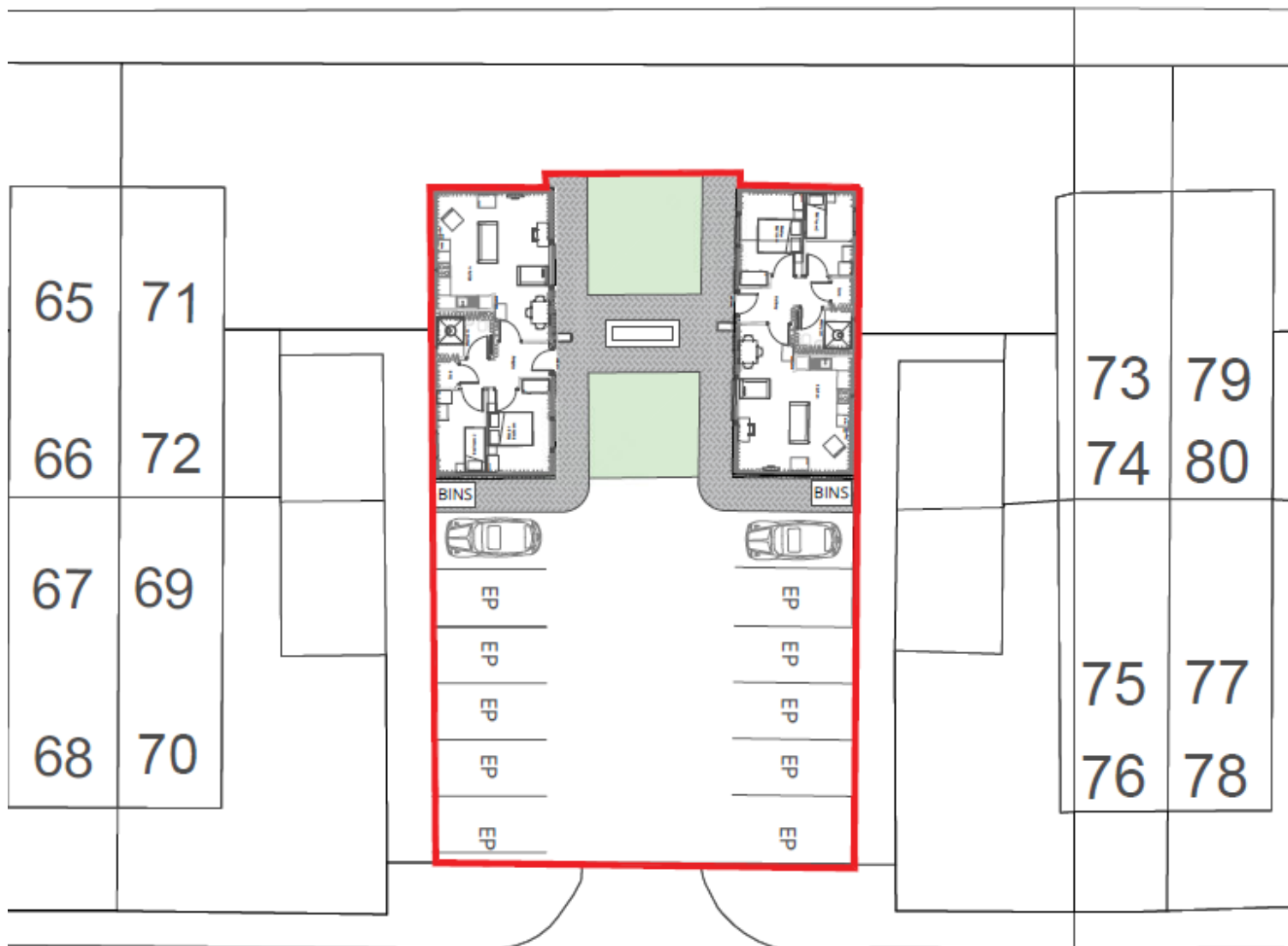
23/00925/FUL

- Location: G33-G48 Garage Adjacent To 71-73 Bellshill Close, Wallsend
- Proposal: Variation of condition 1 of planning approval 22/01672/FUL in order to show increase in height of walls, eaves and ridge height of the approved bungalows following receipt of detailed site levels. Substitution of Approved drawing number 22014-HUSK-DR-ST-01-A-0302-P01 with 22014-HUSK-DR-ST-01-A-0302-P02 (Revised Description 25.07.23)
- Applicant: North Tyneside Council
- Ward: Battle Hill











# Approved Plans

- HUSK DESIGN Ltd**
1. Do not scale off this drawing. Use figure dimensions only.
  2. All dimensions are to the finished work unless stated.
  3. All dimensions are to the finished work.
  4. All materials & components to be specified in the Bill of Materials.
  5. Check all materials & components are specified in the Bill of Materials.
  6. This drawing is to be used in conjunction with the Bill of Materials.

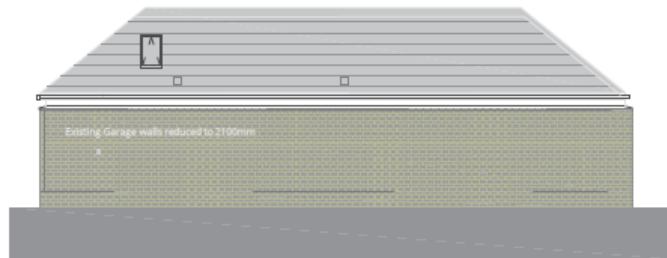


FRONT ELEVATION

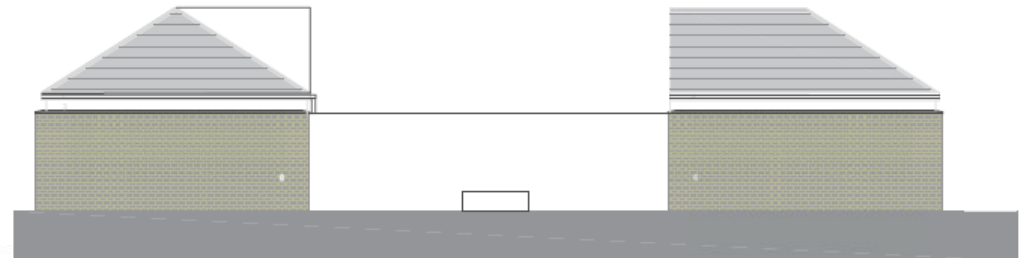


SIDE

SIDE

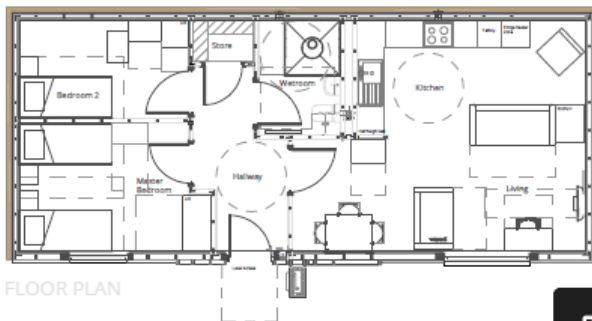


REAR ELEVATION



SIDE

SIDE



FLOOR PLAN

- Black Fascia and soffit - Upvc black
- Grey Upvc Windows
- White thru coloured render
- Hardieplank weatherboarding
- Grey composite front door
- Dark grey concrete roof tiles
- Black Gutters and RWP

UK PATENT No.- GB2534632

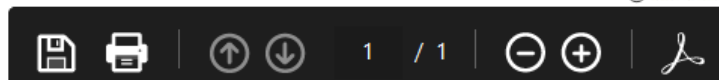
© Husk Design Ltd 2014. All Rights Reserved. Husk Design Ltd is a registered trademark of Husk Design Ltd.

8. Husk House Park, Park Quay, North Shields, NE27 7LJ.  
T: 0191 444 8424  
E: husk@huskdesign.co.uk  
W: www.huskdesign.co.uk

Project  
22014 - HUSK Battle Hill  
North Tyneside Council  
Drawing Title  
Battle Hill Close  
Site 3

Scale as is  
1/200

Information sheet  
Planning

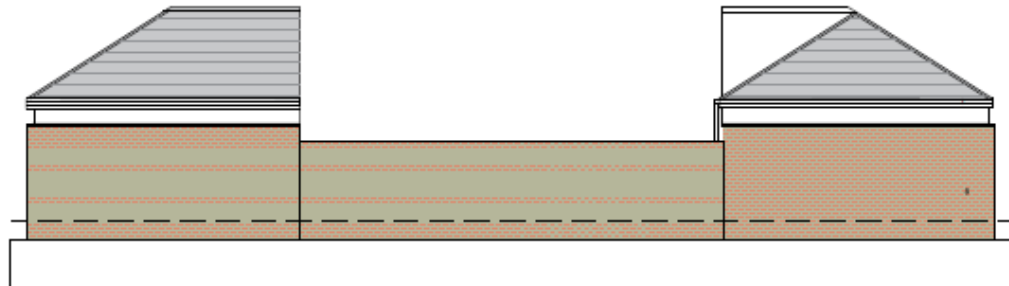


ick wall

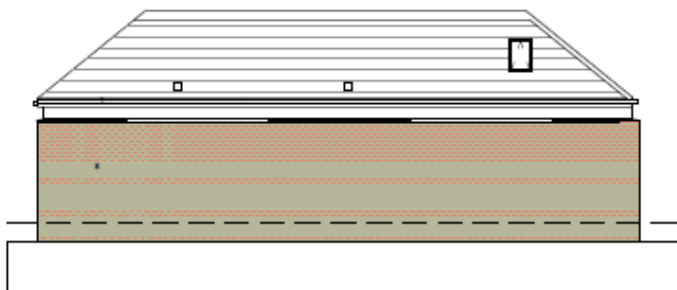
## Proposed Plans



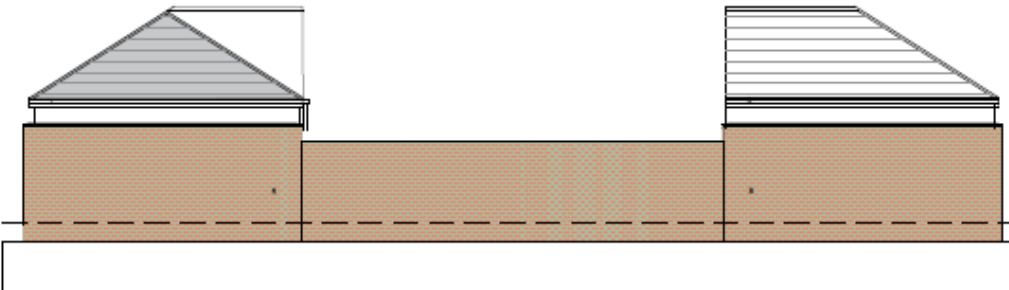
FRONT ELEVATION



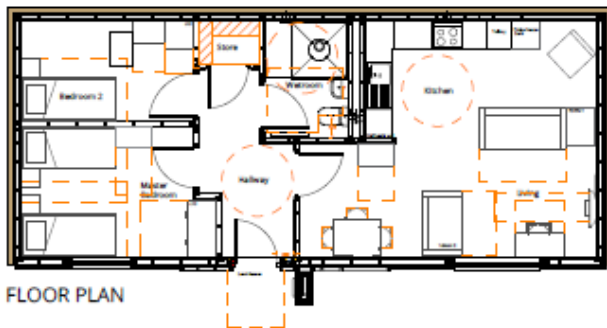
SIDE



REAR ELEVATION



SIDE



FLOOR PLAN

- ①- Black Fascia and soffit - Upvc black
- ②- Grey Upvc Windows
- ③- White thru coloured render
- ④- Hardieplank weatherboarding
- ⑤- Grey composite front door
- ⑥- Dark grey concrete roof tiles
- ⑦- Black Gutters and RWP
- ⑧- Existing brick wall

UK PATENT No.- GB2534

**HUSK**

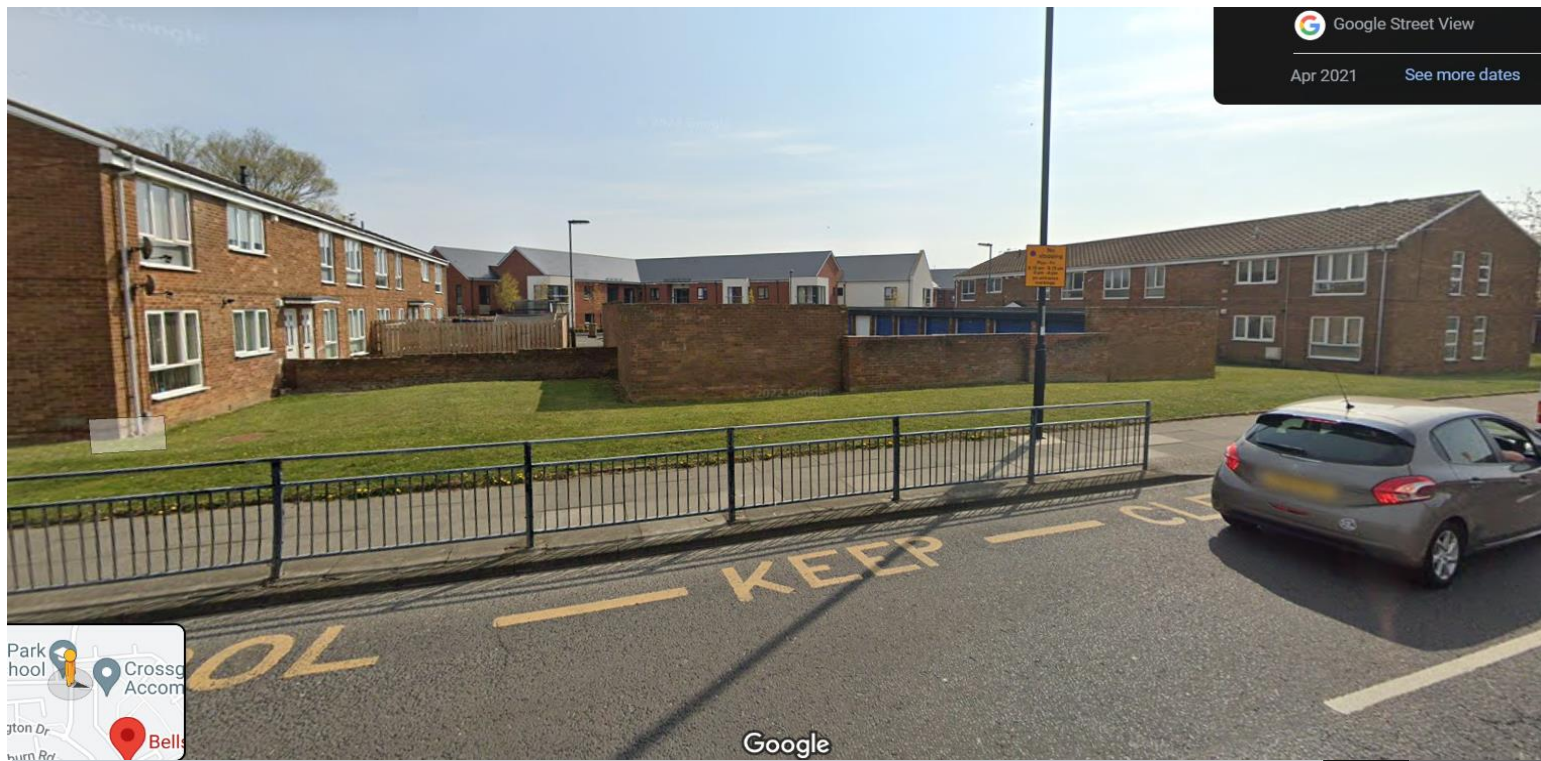
© Husk House Design Ltd. All Rights Reserved. HUSK Ltd.  
11, Green Lane, Brixton, London SW9 6NU  
E: husk@huskdesign.co.uk  
W: www.huskdesign.co.uk

Project:  
22014 - HUSK Bards Hill  
North Tyneside Council  
Drawing Title:  
Bedroom Close  
Site 2

Scale: 1:100

Author: [Name]  
Date: [Date]

Information sheet:  
Plan



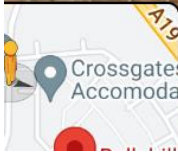




Google Street View

Jun 2023

[See more dates](#)



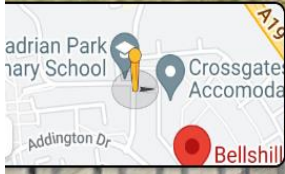




Google Street View

Jun 2023

[See more dates](#)



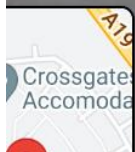
Google



Google Street View

Jun 2023

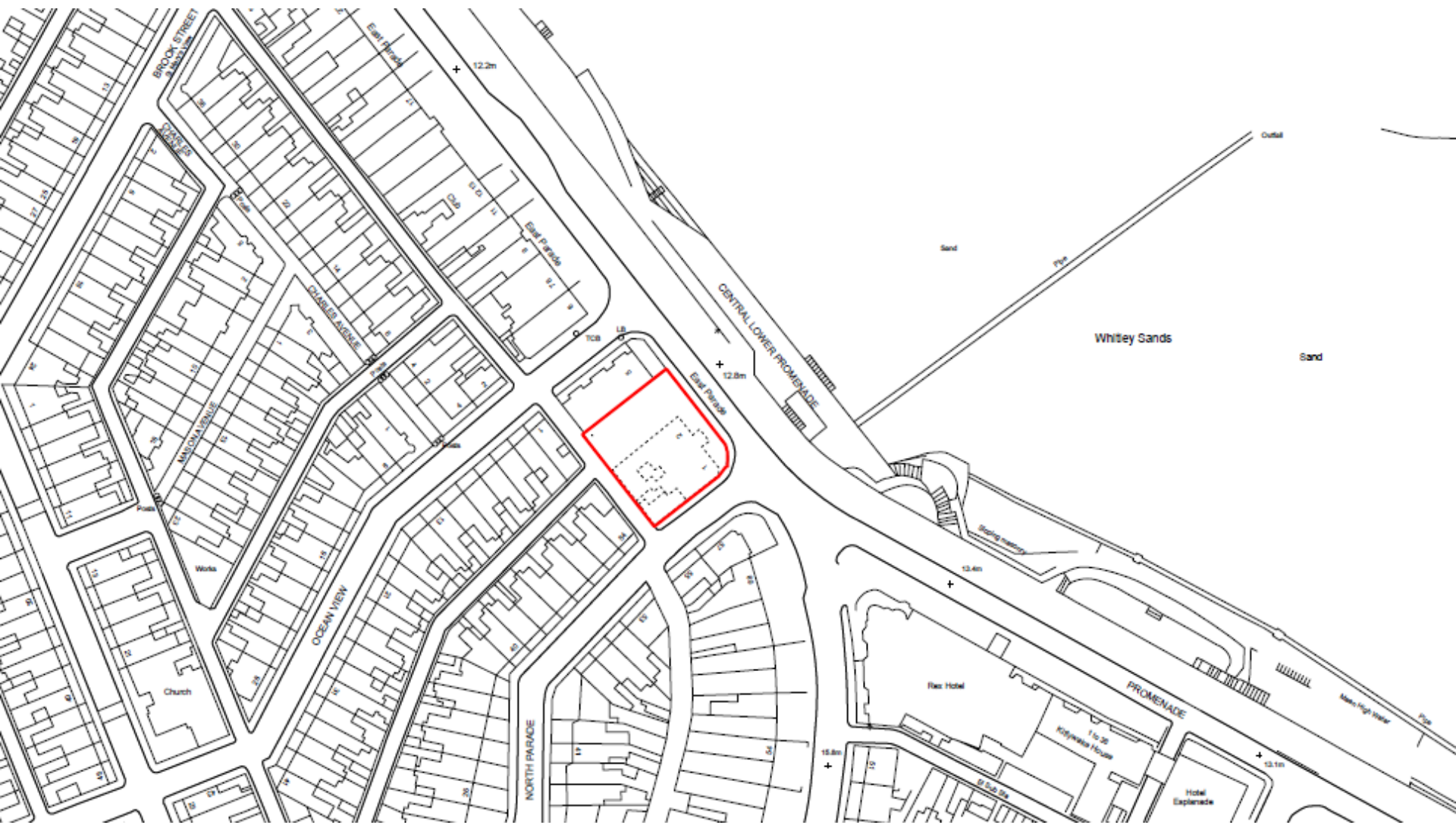
[See more dates](#)

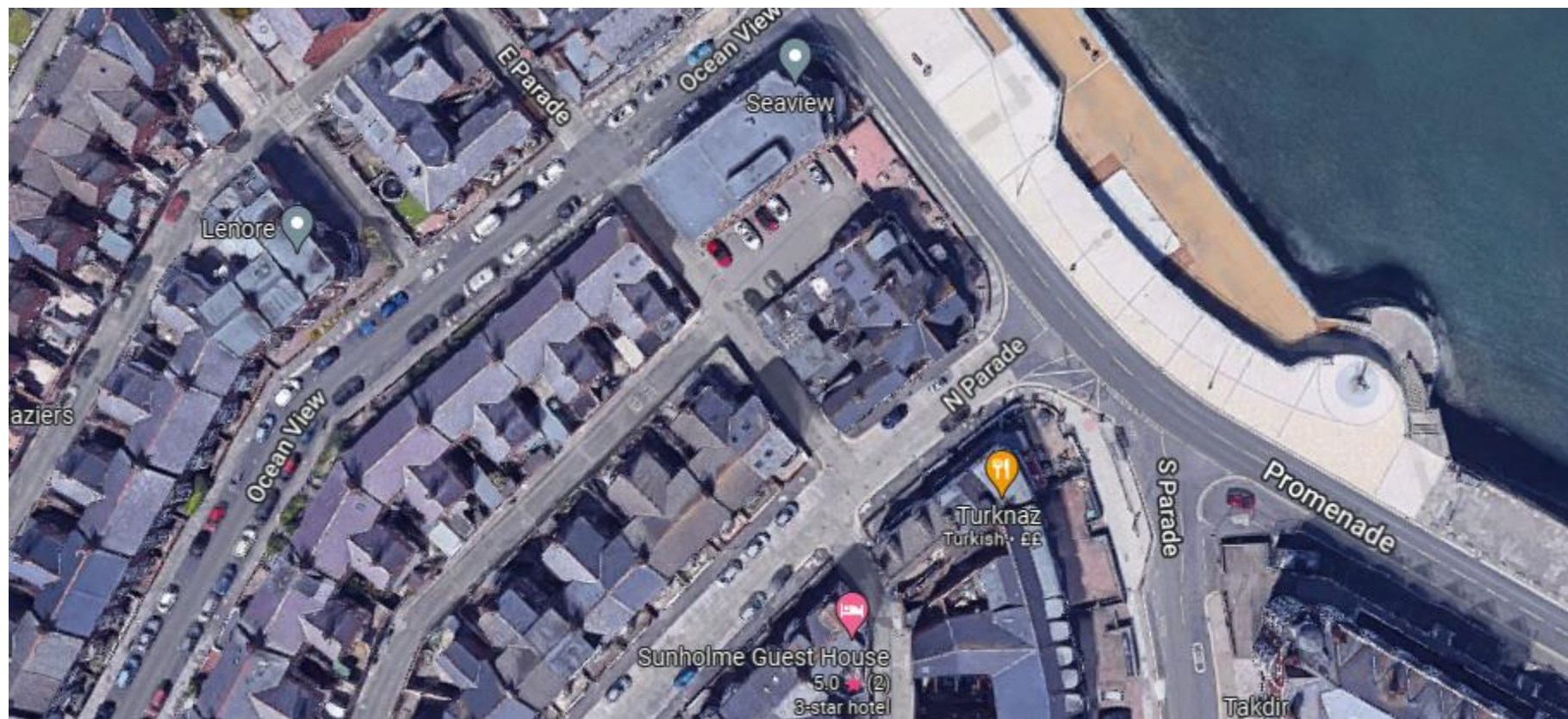




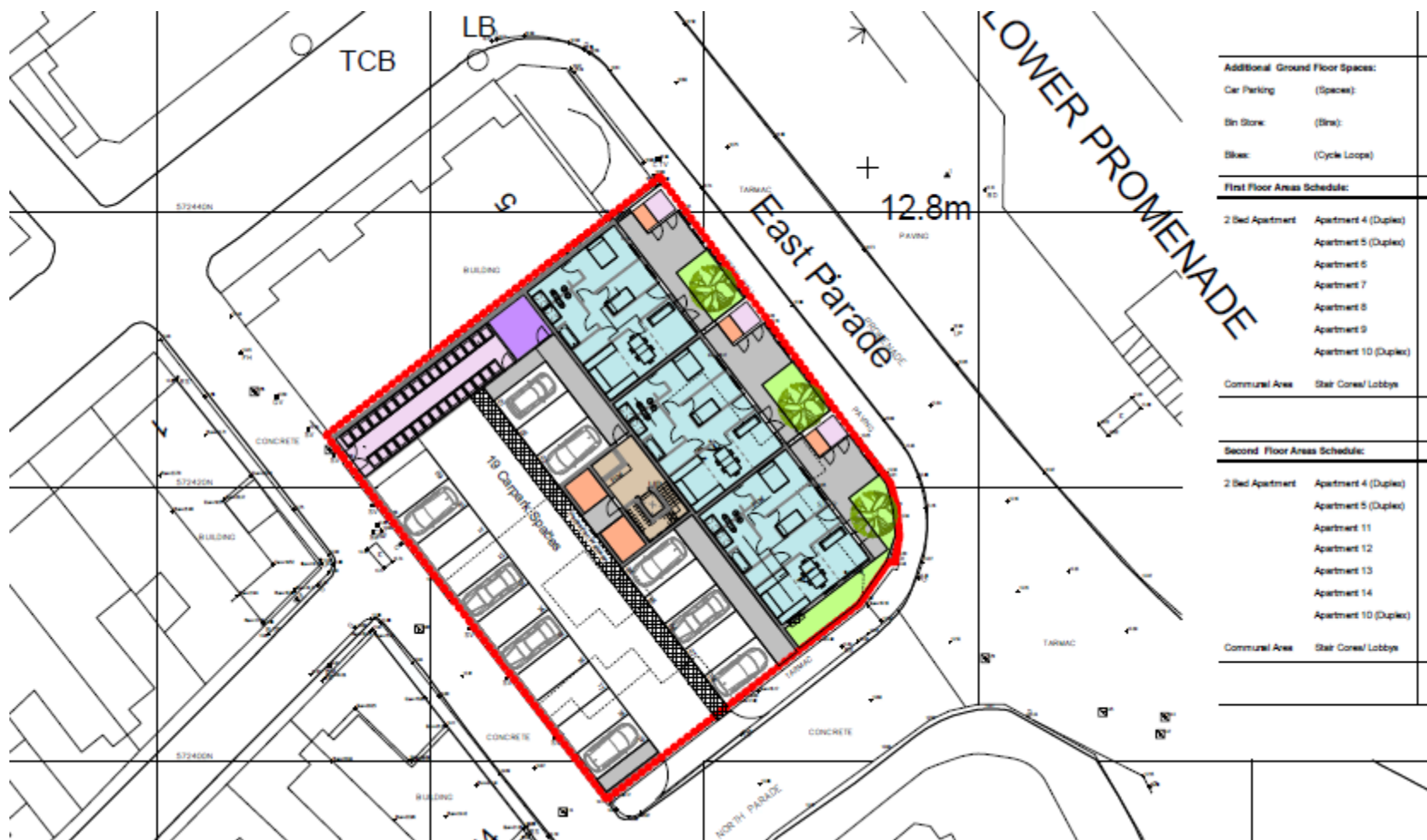
21/00174/FUL

- Location: 1 - 2 East Parade, Whitley Bay
- Proposal: Demolition of existing building and erection of residential development comprising 21 apartments, with associated vehicular access, landscaping and other associated works
- Applicant: North Eastern Holdings Ltd
- Ward: Whitley Bay









#### Additional Ground Floor Spaces:

Car Parking (Spaces):

Bin Store (Bin):

Bike: (Cycle Loops)

#### First Floor Areas Schedule:

2 Bed Apartment	Apartment 4 (Duplex)
	Apartment 5 (Duplex)
	Apartment 6
	Apartment 7
	Apartment 8
	Apartment 9
	Apartment 10 (Duplex)

Communal Area Stair Corral/Lobby

#### Second Floor Areas Schedule:

2 Bed Apartment	Apartment 4 (Duplex)
	Apartment 5 (Duplex)
	Apartment 11
	Apartment 12
	Apartment 13
	Apartment 14
	Apartment 10 (Duplex)

Communal Area Stair Corral/Lobby



**North East Site Elevation**



**Proposed South East Site Elevation**

1 : 500







